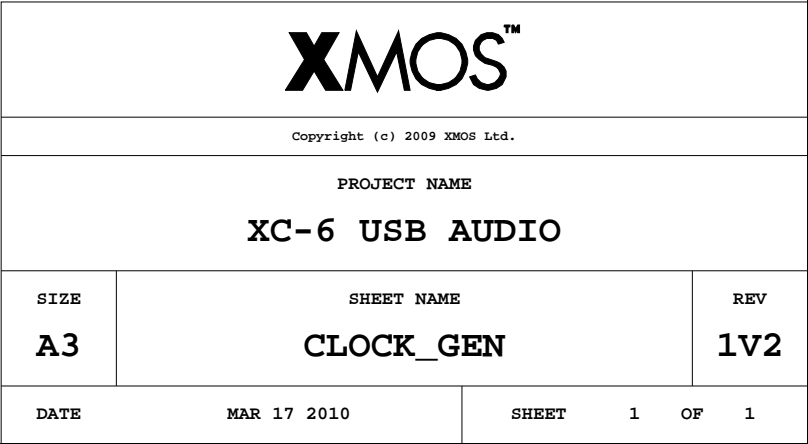
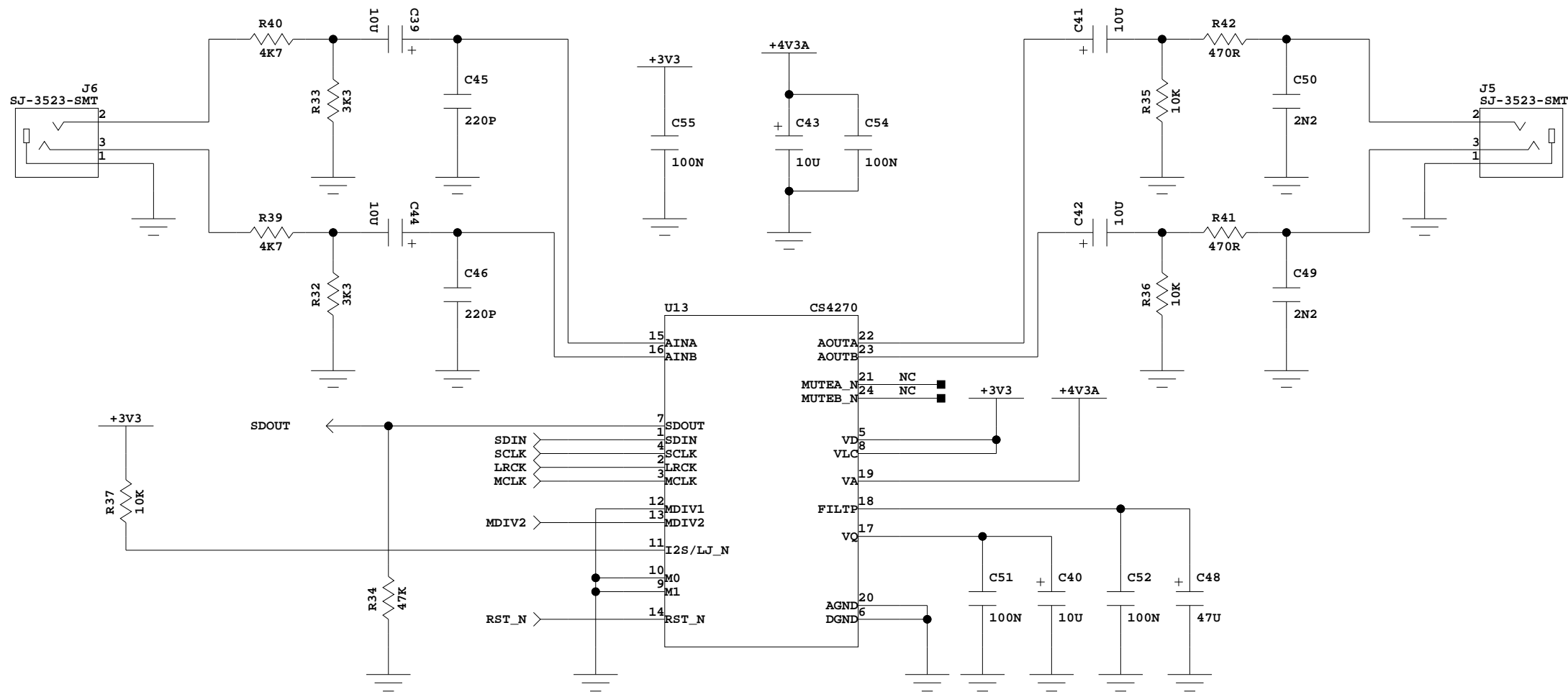


MODE[1:0] = 00 ==> PLL_MULT = 30.75 ==> 13MHZ REFCLK
 MODE[3:2] = 11 ==> BOOT FROM SPI
 MODE[3:2] = 00 ==> BOOT FROM JTAG (DON'T BOOT)
 ALL MODE PINS HAVE INTERNAL PULLUPS

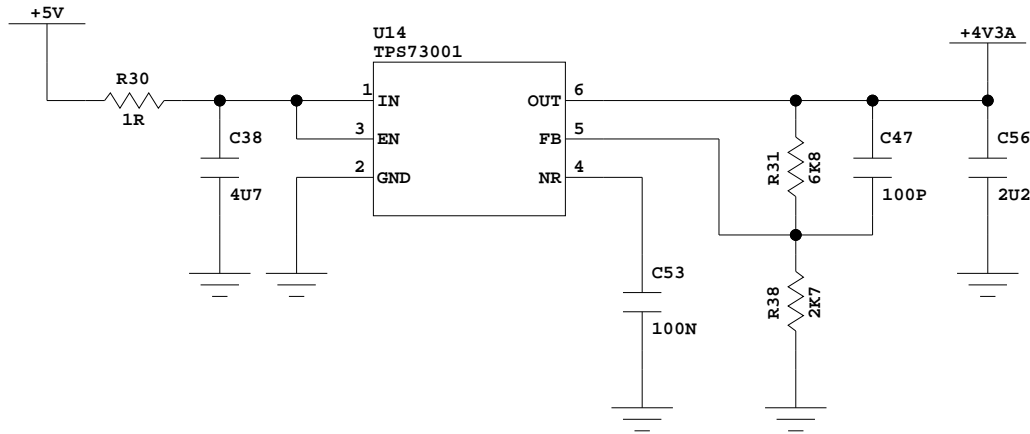
Copyright (c) 2009 Xmos Ltd.		
PROJECT NAME		
XC-6 USB AUDIO		
SIZE	SHEET NAME	REV
A2	L1_128_USB	1V2
DATE	MAR 17 2010	SHEET 1 OF 1





VREF = 1.225V

VOUT = 1.225 * (1 + 6K8/2K7) = 4.31V



4V3A LDO REGULATOR

CODEC DEFAULTS TO STAND ALONE MODE

SDOUT PULLED LOW BY 47K - SLAVE MODE

M0 = 0 : DE-EMPHASIS OFF

M1 = 0 : NOT USED IN STAND ALONE SLAVE MODE

MDIV PINS SELECT CLOCK RATIOS. SEE PAGE 23 OF DATASHEET.

I2S/LJ_N PULLED HIGH : I2S INTERFACE FORMAT.

XMOS™

Copyright (c) 2009 XMOS Ltd.

PROJECT NAME

XC-6 USB AUDIO

SIZE

A3

SHEET NAME

CODEC

REV

1V2

DATE

MAR 17 2010

SHEET

1

OF

1